

Gilson BROTHERS COMPANY

BOX 152, PLYMOUTH, WISCONSIN 53073, U.S.A., PHONE (414) 893-1011

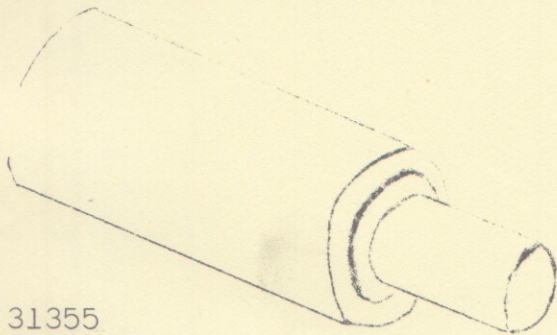
January 25, 1974

Service Bulletin #79

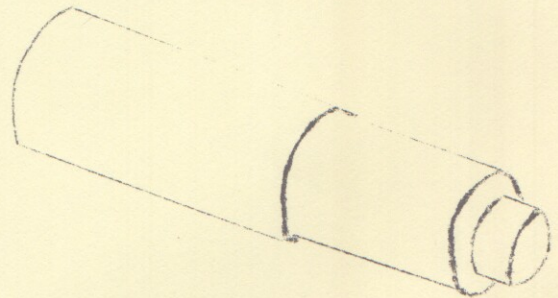
TO: All Parts and Unit Dealers -- Distributors

SUBJECT: Special Tool Kit 31752 for walk behind Tillers
and Snowthrowers

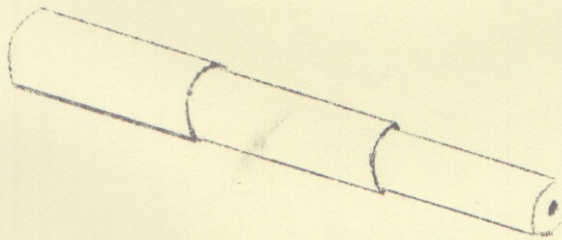
We are now offering four special field service tools to assist in the repair of subject unit worm gear cases. We feel that these tools will not only save valuable repair time but will also assure proper dis-assembly and re-assembly of subject gear cases.



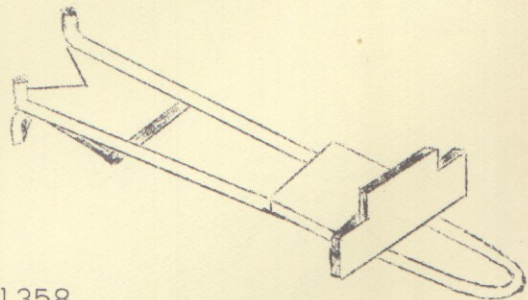
31355
\$3.50 BUSHING DRIVER



31356
\$3.50 SEAL DRIVER



31357
\$3.50 SEAL & BUSHING REMOVER



31358
\$2.50 SPANNER WRENCH

These tools will be available through your local Central Parts Distributor. All tools are available individually but we suggest they be purchased in kit form. The cost for the complete kit is \$12.00 net F.O.B. factory.

Service Dept.
RLM/kb

O U T D O O R P O W E R E Q U I P M E N T

PLANTS AT: WINDSOR AND MALTON, ONT., STATESVILLE, N.C., FREDONIA AND PLYMOUTH, WIS.